

TECHNICAL DATA

TiS75, TiS65, TiS60, TiS55, TiS50, TiS45, TiS40, TiS20 and TiS10 Infrared Cameras

The Fluke Performance Series



GOOD IMAGE QUALITY WITH UP TO 320 X 240 RESOLUTION

RESOLUTION	FIELD OF VIEW
TiS75 320 x 240 D:S 504:1	35.7 °H x 26.8 °V
TiS65/60 260 x 195 D:S 409:1	
TiS55/50 220 x 165 D:S 346:1	
TiS45/40 160 x 120 D:S 252:1	
TiS20 120 x 90 D:S 189:1	
TiS10 80 x 60 D:S 126:1	

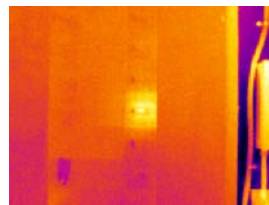


Fluke Connect® compatible

Rugged. Accurate. Built to perform.

- Save time - wirelessly sync images directly from your camera to the **Fluke Connect® system**, and attach to an asset record or work order. Having access to maintenance records simultaneously at the inspection site and from the office or an off-site location enables faster decision making and real time collaboration between team members
- Get the context of the visual and infrared details all in one precisely blended or picture-in-picture image with **IR-Fusion® technology**
- Get precisely focused images from as close as 15 cm (6 in) with **manual focus**, or choose **fixed focus** for faster images without the need to focus from 45 cm (1.5 ft) and beyond
- Monitor your battery charge and avoid an unexpected loss of power with the **smart battery** with LED charge indicator
- Get easy access to saved images with a **removable SD card**
- Digitally document critical information such as the location of the equipment or the motor nameplate with the infrared image using **IR-PhotoNotes™** or **voice annotation***

See the problem and location in one image with IR-Fusion® technology.



Full infrared



50% blending, picture-in-picture mode



50% blending

*Varies by model

Detailed specifications

	TiS75	TiS65 TiS60	TiS55 TiS50		TiS45 TiS40		TiS20	TiS10	
Key features									
IFOV (spatial resolution)	2.0 mRad	2.4 mRad	2.8 mRad		3.9 mRad		5.2 mRad	7.8 mRad	
Detector resolution	320 x 240 (76,800 pixels)	260 x 195 (50,700 pixels)	220 x 165 (36,300 pixels)		160 x 120 (19,200 pixels)		120 x 90 (10,800 pixels)	80 x 60 (4,800 pixels)	
Field of view	35.7 °H x 26.8 °V								
Distance to spot	504:1	409:1	346:1		252:1		189:1	126:1	
Focus system	Manual focus, minimum focus distance 15 cm (~6 in)	Fixed focus, minimum focus distance 45 cm (~18 in)	Manual focus, minimum focus distance 15 cm (~6 in)	Fixed focus, minimum focus distance 45 cm (~18 in)	Manual focus, minimum focus distance 15 cm (~6 in)	Fixed focus, minimum focus distance 45 cm (~18 in)			
Wireless connectivity	Yes, to PC, iPhone® and iPad® (iOS 4s and later), Android™ 4.3 and up, and WiFi to LAN (where available)								
Fluke Connect® app compatible	Yes*, connect your camera to your smartphone, and images taken automatically upload to the Fluke Connect® app for saving and sharing								
Fluke Connect® Assets optional software	Yes*, assign images to assets and create work orders. Easily compare measurement types—whether mechanical, electrical or infrared images—in one location								
Fluke Connect® Instant Upload	Yes*, connect your camera to your building's WiFi network, and images taken automatically upload to the Fluke Connect® system for viewing on your smartphone or PC								
Fluke Connect® tool compatible	Yes*, connects wirelessly to select Fluke Connect® enabled tools and displays measurements on camera screen. Five simultaneous connections supported								
IR-Fusion® technology	Yes, adds the context of the visible details to your infrared image							—	
AutoBlend™ mode	100 %, 75 %, 50 %, 25 % IR plus full visible on camera; continuously variable in software						100 %, 50 % IR and full visible on camera; continuously variable in software	100 % IR and full visible on camera; continuously variable in software	
Picture-In-Picture (PIP)	100 %, 75 %, 50 %, 25 % IR; continuously variable in software						Not available on camera; continuously variable in software		
Ruggedized display	3.5 inch (landscape) 320 x 240 LCD								
Rugged, ergonomic design for one-handed use	Yes								
Thermal sensitivity (NETD)	≤ 0.08 °C at 30 °C target temp (80 mK)				≤ 0.09 °C at 30 °C target temp (90 mK)		≤ 0.10 °C at 30 °C target temp (100 mK)	≤ 0.15 °C at 30 °C target temp (150 mK)	
Level and span	Smooth auto and manual scaling								
Fast auto toggle between manual and auto modes	Yes								
Fast auto-rescale in manual mode	Yes								
Minimum span (in manual mode)	2.5 °C (4.5 °F)								
Minimum span (in auto mode)	5 °C (9.0 °F)								
Built-in digital camera (visible light)	5MP								
Frame rate	30 Hz or 9 Hz versions	9 Hz	30 Hz or 9 Hz versions	9 Hz	30 Hz or 9 Hz versions	9 Hz			
Laser pointer	Yes								
Data storage and image capture									
Extensive memory options	Internal 4GB memory and 4GB micro SD card					Internal 4GB memory (includes slot for optional micro SD card)			
Image capture, review, save mechanism	One-handed image capture, review, and save capability								
Image file formats	Non-radiometric (.bmp) or (.jpeg) or fully-radiometric (.is2); No analysis software required for non-radiometric (.bmp, .jpg) files								
Memory review	Dedicated memory view button for quick access to stored images; thumbnail and full screen review								
Software	SmartView® full analysis and reporting software and Fluke Connect® system*								
Export file formats with SmartView® software	Bitmap (.bmp), GIF, JPEG, PNG, TIFF								
Voice annotation	60 seconds maximum recording time per image; reviewable playback on camera; Bluetooth headset required (sold separately)						—		
IR-PhotoNotes™	Yes (3 images)			Yes (1 image)		—			
Video recording	Standard and radiometric			—					
Video file formats	Non-radiometric (MPEG - encoded .avi) and fully radiometric (.is3)			—					
Streaming video (remote display)	Yes, see the live stream of the camera display on your PC or smartphone. Via USB, WiFi hotspot, or WiFi network to SmartView® software on a PC; or via WiFi hotspot to the Fluke Connect® app on a smartphone			—					
Auto capture (temperature and interval)	Yes								

*Fluke Connect® system is not available in all countries. Please check availability with your authorized Fluke distributor.

Detailed specifications

	TiS75	TiS65 TiS60	TiS55 TiS50	TiS45 TiS40	TiS20	TiS10
Battery						
Batteries (field-replaceable, rechargeable)	Two lithium ion smart battery pack with five-segment LED display to show charge level		One lithium ion smart battery pack with five-segment LED display to show charge level			
Battery life	Four+ hours continuous use per battery pack					
Battery charge time	2.5 hours to full charge					
Battery charging system	Two-bay battery charger or in-imager charging. Optional 12 V automotive charging adapter		In-imager charging. Optional two-bay battery charger or 12v automotive charging adapter sold separately			
AC operation	AC operation with included power supply (100 V AC to 240 V AC, 50/60 Hz)					
Power saving	User selectable sleep and power off modes					
Temperature measurement						
Temperature measurement range (not calibrated below -10 °C)	-20 °C to +550 °C (-4 °F to 1022 °F)		-20 °C to +450 °C (-4 °F to 842 °F)		-20 °C to +350 °C (-4 °F to 662 °F)	
Accuracy	± 2 °C or 2 % (at 25 °C nominal, whichever is greater)					
On-screen emissivity correction	Yes (both value and table)					
On-screen reflected background temperature compensation	Yes					
On-screen transmission correction	Yes	–	Yes	–	Yes	–
Color palettes						
Standard palettes	8: Ironbow, Blue-Red, High Contrast, Amber, Amber Inverted, Hot Metal, Grayscale, Grayscale Inverted			7: Ironbow, Blue-Red, High Contrast, Amber, Hot Metal, Grayscale, Grayscale Inverted		6: Ironbow, Blue-Red, High Contrast, Amber, Hot Metal, Grayscale 3: Ironbow, Blue-Red, Grayscale
Ultra Contrast™ palettes	8: Ironbow Ultra, Blue-Red Ultra, High Contrast Ultra, Amber Ultra, Amber Inverted Ultra, Hot Metal Ultra, Grayscale Ultra, Grayscale Inverted Ultra			–		–
General specifications						
Color alarms (temperature alarms)	High temperature, low temperature, isotherms (within range)			High temperature, low temperature		–
Infrared spectral band	7.5 µm to 14 µm					
Operating temperature	-10 °C to +50 °C (14 °F to 122 °F)					
Storage temperature	-20 °C to +50 °C (-4 °F to 122 °F) without batteries					
Relative humidity	10% to 95%, non-condensing					
Center-point temperature measurement	Yes					
Spot temperature	Hot and cold spot markers					
User-definable spot markers	3	2	1	–	–	–
Center box	Expandable-contractible measurement box with MIN-MAX-AVG temp display			–		–
Safety standards	EN 61010-1: CAT none, pollution degree 2, EN 60825-1: Class 2, EN 60529, EN 62133 (lithium battery)					
Electromagnetic compatibility	EN 61326-1:2006, EN 55011: Class A, EN 61000-4-2, EN 61000-4-3					
C Tick	IEC/EN 61326-1					
US FCC	EN61326-1; FCC Part 5, EN 55011: Class A, EN 61000-4-2					
Vibration and Shock	2G, IEC 68-2-6 and 25G, IEC 68-2-29					
Drop	Engineered to withstand 2 meter (6.5 feet) drop					
Size (H x W x L)	26.7 cm x 10.1 cm x 14.5 cm (10.5 in x 4.0 in x 5.7 in)					
Weight (battery included)	Fixed Focus .72 kg (1.6 lb), Manual focus .77 kg (1.7 lb)					
Enclosure rating	IP54 (protected against dust, limited ingress; protection against water spray from all directions)					
Warranty	Two-years (standard), extended warranties are available					
Recommended calibration cycle	Two-years (assumes normal operation and normal aging)					
Supported languages	Czech, Dutch, English, Finnish, French, German, Hungarian, Italian, Japanese, Korean, Polish, Portuguese, Russian, Simplified Chinese, Spanish, Swedish, Traditional Chinese, and Turkish					

*Fluke Connect® system is not available in all countries. Please check availability with your authorized Fluke distributor.

Ordering information

FLK-TiS75 30HZ Infrared Camera
 FLK-TiS75 9HZ Infrared Camera
 FLK-TiS65 30HZ Infrared Camera
 FLK-TiS65 9HZ Infrared Camera
 FLK-TiS60 9HZ Infrared Camera
 FLK-TiS55 30HZ Infrared Camera
 FLK-TiS55 9HZ Infrared Camera
 FLK-TiS50 9HZ Infrared Camera
 FLK-TiS45 30HZ Infrared Camera
 FLK-TiS45 9HZ Infrared Camera
 FLK-TiS40 9HZ Infrared Camera
 FLK-TiS20 9HZ Infrared Camera
 FLK-TiS10 9HZ Infrared Camera

Included

Infrared camera; AC power supply (including universal AC adapters); two-bay smart battery charger (TiS75, TiS65, TiS60 only); rugged lithium ion smart battery (TiS75, TiS65/60 include 2 each—other models 1 each); USB cable; 4 GB micro SD card (TiS75, TiS65/60, TiS55/50, TiS45 only); rugged, hard carrying case (TiS75, TiS65/60, TiS55/50; TiS45/40); soft transport bag; adjustable hand strap (TiS75, TiS65/60, TiS55/50, TiS45/40). **Available by free download:** SmartView® desktop software and user manual.

Optional accessories

FLK-BLUETOOTH Bluetooth Headset
 FLK-TI-TRIPOD3 Tripod Mounting Accessory
 BOOK-ITP Introduction to Thermography Principles Book
 FLK-TI-SBP3 Additional Smart Battery
 FLK-TI-SBC3B Smart Battery Charger
 TI-CAR CHARGER Car Charger

Fluke Connect® modules

FLK-a3000 FC AC Current Clamp Module
 FLK-a3001 FC iFlex™ AC Current Clamp Module
 FLK-a3002 FC AC/DC Current Module
 FLK-a3003 FC DC Wireless Clamp
 FLK-a3004 FC DC Wireless Clamp
 FLK-v3000 FC AC Voltage Module
 FLK-v3001 FC DC Voltage Module
 FLK-t3000 FC K-Type Temperature Module

RF connection time (binding time) may take up to 1 minute.

The Professional Series

For a high performance, feature rich thermal imager that produces consistently in-focus images with a touch of a button EVERY, SINGLE, TIME, consider the Professional Series with LaserSharp® Auto Focus.



Preventive maintenance simplified. Rework eliminated.

Save time and improve the reliability of your maintenance data by wirelessly syncing measurements using the Fluke Connect® system.

- Eliminate data-entry errors by saving measurements directly from the tool and associating them with the work order, report or asset record.
- Maximize uptime and make confident maintenance decisions with data you can trust and trace.
- Access baseline, historical and current measurements by asset.
- Move away from clipboards, notebooks and multiple spreadsheets with a wireless one-step measurement transfer.
- Share your measurement data using ShareLive™ video calls and emails.
- The Fluke Performance Series is part of a growing system of connected test tools and equipment maintenance software. Visit the website to learn more about the Fluke Connect® system.

Find out more at flukeconnect.com



All trademarks are the property of their respective owners. WiFi or cellular service required to share data. Smartphone, wireless service and data plan not included with purchase. First 5 GB of storage is free. Phone support details can be viewed at fluke.com/phones.

Smart phone wireless service and data plan not included with purchase. Fluke Connect is not available in all countries.

Fluke. Keeping your world up and running.®

Fluke Corporation
 PO Box 9090, Everett, WA 98206 U.S.A.

Fluke Europe B.V.
 PO Box 1186, 5602 BD Eindhoven, The Netherlands

Modification of this document is not permitted without written permission from Fluke Corporation.

For more information call:
 In the U.S.A. (800) 443-5853 or Fax (425) 446-5116
 In Europe/M-East/Africa +31 (0)40 267 5100 or Fax +31 (0)40 267 5222
 In Canada (800)-36-FLUKE or Fax (905) 890-6866
 From other countries +1 (425) 446-5500 or Fax +1 (425) 446-5116
 Web access: <http://www.fluke.com>

©2016 Fluke Corporation. Specifications subject to change without notice. 4/2016 6005299e-en