

Key Features

- Non-contact sensing, up to 0.5" gap distance (dependent on magnet size/configuration)
- End-of-shaft mounting
- Nylon, PVC, aluminum, or stainless steel
- Custom sizes and number of pulses
- Impervious to water, grease, dust, oil, dirt, etc.

The large gap distance from the sensor allows maximum flexibility in mounting the sensor, making them ideal for environments where there is vibration, dirt, dust, grease, or water.



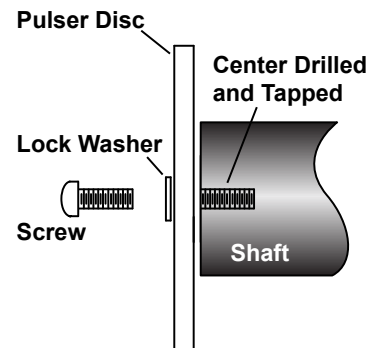
Description

Standard shaft-end Pulser Discs are made of nylon, PVC, aluminum, or stainless steel and have magnets of alternating polarity (N-S-N-S) embedded on the outside face or the circumference. Simply center-drill and tap the end of the shaft to be monitored and secure the Pulser Disc onto the shaft.

The number of pulses per revolution generated by the Pulser Disc and sensor depends on the sensor used. Generally, a Hall Effect sensor will produce one pulse for every two magnets, since the sensor switches between high and low in the presence of both a north and a south pole magnet. A Magnetoresistive sensor will generate one square wave pulse per magnet. Special discs can be custom manufactured to meet specific needs. Steel slugs are also available on aluminum or PVC discs.

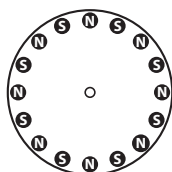
Mounting

Center-drill the shaft to a depth of 0.5" with a No. 21 drill, then tap for a 10/32 UNF screw. Apply adhesive to the screw threads and secure onto the end of the shaft with the provided 10-32 mounting screw. Torque the mounting screw to a maximum of 8-10 foot pounds.



Pulser Discs are available in two standard configurations:

- Face Read: 0.25" thick discs with 0.25" or 0.5" diameter magnets mounted on the face of the disc.
- Edge Read: 0.625" thick discs with 0.25" or 0.5" diameter magnets mounted around the circumference.



Face Read (A)



Edge Read (B)



Reliable Products
Trustworthy People

Pulser Discs

Shaft Speed Pulse Generators

Ordering

Face Read

Model	Material	Outside Diameter	Number of Magnets, Neodymium Magnets, or Slugs	Thickness	Bore Size	Part Number
255 - Standard	Nylon	4"	16 (0.5") Magnets	0.25"	0.196"	700-000200
255A - Standard	Aluminum	4"	16 (0.5") Magnets	0.25"	0.196"	700-001500
255EZ - Standard	Nylon	4"	16 (0.5") Magnets	0.25"	0.515"	700-000206
232 - Standard	PVC	4"	32 (0.25") Magnets	0.25"	0.196"	700-001400
232A - Standard	Aluminum	4"	32 (0.25") Magnets	0.25"	0.196"	700-001401
256 - Standard	PVC	2.50"	8 (0.5") Magnets	0.25"	0.196"	700-000300
256A - Standard	Aluminum	2.50"	8 (0.5") Magnets	0.25"	0.196"	700-001600
257 - Standard	PVC	8"	32 (0.5") Magnets	0.25"	0.196"	700-002100
257A - Standard	Aluminum	8"	32 (0.5") Magnets	0.25"	0.196"	700-002101
258 - Standard	PVC	4"	8 (0.5") Magnets	0.25"	0.196"	700-000209
258A - Standard	Aluminum	4"	8 (0.5") Magnets	0.25"	0.196"	700-000212
232-EZ	PVC	4"	32 (0.25") Magnets	0.25"	0.515"	700-001404
232	PVC	4"	16 (0.25") Magnets	0.25"	0.196"	700-001405
232A-EZ	Aluminum	4"	32 (0.25") Magnets	0.25"	0.515"	700-001403
255	Stainless Steel	4"	16 (0.50") Magnets	0.25"	0.196"	700-000203
255	PVC	4"	16 (0.50") Magnets	0.25"	0.196"	700-000204
255	PVC	4"	16 (0.50") Slugs	0.25"	0.196"	700-000205
255	PVC	4"	2 (0.50") Slugs	0.25"	0.196"	700-000208
255	PVC	4"	4 (0.50") Magnets	0.25"	0.196"	700-000210
255	PVC	4"	8 (0.50") North Facing Magnets	0.25"	0.196"	700-000214
255	PVC	4"	8 (0.50") Slugs	0.25"	0.196"	700-000216
255	PVC	4"	2 (0.50") Magnets	0.25"	0.196"	700-000400
255A	Aluminum	4"	16 (0.50") Neodymium Magnets	0.25"	0.196"	700-001503
255A-EZ	Aluminum	4"	16 (0.50") Magnets	0.25"	0.515"	700-001502
256	PVC	2.50"	8 (0.50") Slugs	0.25"	0.196"	700-000301
256	PVC	2.50"	2 (0.50") Magnets	0.25"	0.196"	700-001200
256	PVC	2.50"	2 (0.50") Slugs	0.25"	0.196"	700-001201
256A	Aluminum	2.50"	2 (0.50") Magnets	0.25"	0.196"	700-001202
256A	Aluminum	2.50"	4 (0.50") Magnets	0.25"	0.196"	700-001700
257	PVC	8"	16 (0.50") Slugs	0.25"	0.196"	700-002102
257	PVC	8"	8 (0.50") Slugs	0.25"	0.196"	700-002103
257	PVC	8"	4 (0.50") Slugs	0.25"	0.196"	700-002104
257	PVC	8"	16 (0.50") Magnets	0.25"	0.196"	700-002105
257	PVC	8"	8 (0.50") Magnets	0.25"	0.196"	700-002106
257A	Aluminum	8"	16 (0.50") Magnets	0.25"	0.196"	700-002000

(Continued)



Ordering

(Continued)

Face Read

258	Stainless Steel	4"	8 (0.50") Magnets	0.25"	0.196"	700-000213
258	PVC	4"	8 (0.50") Neodymium Magnets	0.25"	0.196"	700-000215
258A	Aluminum	4"	8 (0.50") Neodymium Magnets	0.25"	0.196"	700-003800
EZ-3/4in / EZ-18mm	PVC	2"	16 (0.25") Magnets	0.50"	0.62"	700-000100
EZ-3/4in / EZ-18mm	PVC	2"	8 (0.25") Magnets	0.50"	0.62"	700-000101
PD455	PVC	4.75"	20 (0.50") Magnets	0.25"	0.196"	700-002500
PD455	Aluminum	4.75"	20 (0.50") Magnets	0.25"	0.196"	700-002501
PD225	PVC	2.75"	20 (0.25") Magnets	0.25"	0.196"	700-002700
PD725	Aluminum	7.50"	60 (0.25") Magnets	0.25"	0.196"	700-002800
PD725	Aluminum	7.50"	30 (0.25") Magnets	0.25"	0.196"	700-002801
PD725	PVC	7.50"	30 (0.25") Slugs	0.25"	0.196"	700-002803

Edge Read

Model	Material	Outside Diameter	Number of Magnets, Neodymium Magnets, or Slugs	Thickness	Bore Size	Part Number
PDE450	PVC	4"	20 (0.5") Magnets	0.625"	0.196"	700-002600
PDE450	PVC	4"	20 (0.5") Slugs	0.625"	0.196"	700-002604
PDE450	PVC	4"	16 (0.5") Magnets	0.625"	0.196"	700-002614
PDE450A	Aluminum	4"	16 (0.5") Magnets	0.625"	0.196"	700-002615

Pulser Discs Specifications

Maximum Speed	10,000 rpm at ambient temperature
Operating Temperature (PVC and Nylon)	-40° F → +140° F
Operating Temperature (Aluminum and Stainless Steel)	-40° F → +302° F

Options

Disc Guards	Part Number
Standard Disc Guard (for 4" discs)	725-005300
EZ-Mount Disc Guard (for 4" discs)	725-005200
EZ-Mount Lower Disc Guard (for 4" discs)	725-005201
EZ-SCP Disc Guard (for 4" discs)	725-005600
933 XP Disc Guard (for 4" discs)	725-005400

Customization

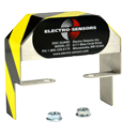
If one of our standard products does not meet your specifications, please call one of our applications specialists. Many of our products can be customized to fit specific needs.

Additional Information

Please call Electro-Sensors for more information.



Standard Disc Guard



EZ-Mount Disc Guard



Lower EZ-Mount Disc Guard



EZ-SCP Disc Guard